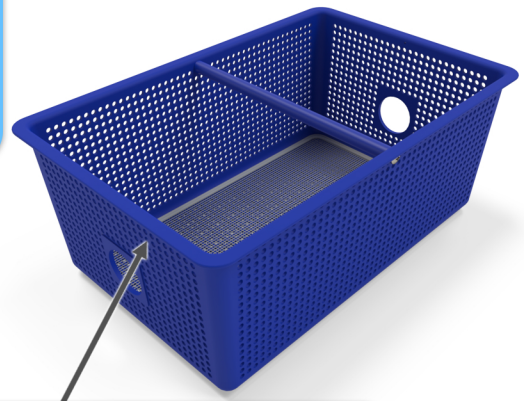


Operations Guide - FilterShield™1000



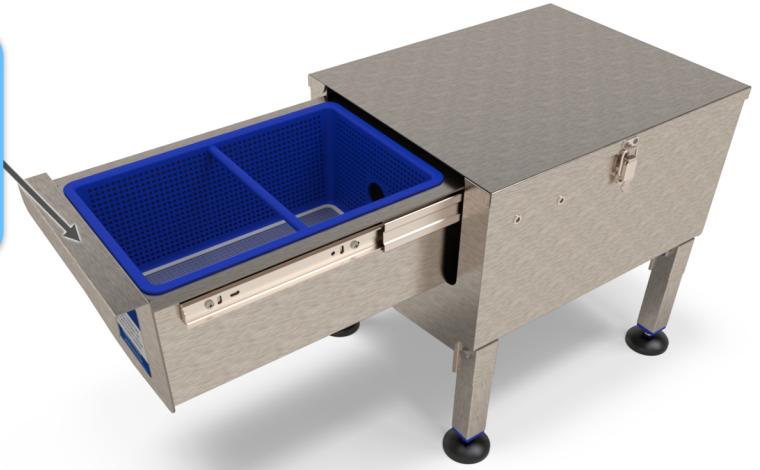
Quick Release Lid
The FilterShield™1000s Lid simply clips in place and is quick to remove when a service is required. The Stainless Steel Toggle Latches hold the Lid in place to stop any liquid splashes or odours escaping from it.



Filter Basket
The Filter Basket collects any solid contaminants that pass through the arterial drainage line. The perforated design allows liquids to pass through and de-waters any solids that are collected. The basket is easy to remove and clean.

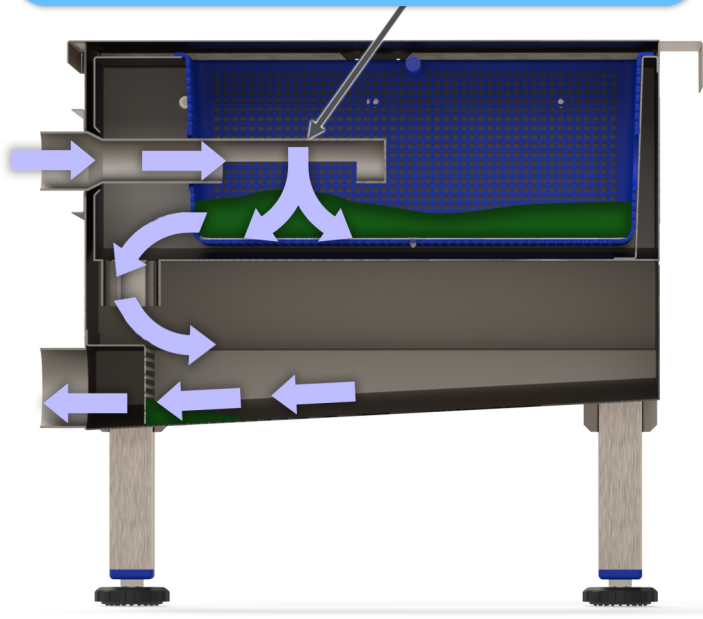
Self Levelling Adjustable Feet
The FilterShield™1000 is supplied with self levelling adjustable feet. These feet can raise the height of the FilterShield™1000 by up to 120mm (4.7")

Pull Out Drawer
The FilterShield™1000 features a pull-out drawer that holds the Filter Basket. This allows it to be installed in areas where access from above is limited or restricted. The ball bearing drawer runners provide a smooth motion and also lock it in place during normal operation



Downpipe Inlet
The FilterShield™1000 has a Downpipe inlet design which helps to control the flow and distributes it into the base of the filter basket. This assists with the solid separation and de-watering processes. The liquid effluent passes through the perforated holes and the solid contaminants are retained in the basket.

Secondary Filter Plate
The FilterShield™1000 has a secondary filter plate in the base of the tank, before the outlet. This is to prevent any Solids Waste from passing through if the Filter Basket is not in place or the drawer is left open.



Environmental Products and Services Ltd
Award Winning Technology

FilterShield™
Food & Solid Waste Removal

V4 08/08/2022

www.epas-ltd.com

HEAD OFFICE +44 (0) 28 3083 3081

sales@epas-ltd.com

GB OFFICE +44 (0) 161 477 5555